



## MACHINE TOOLS





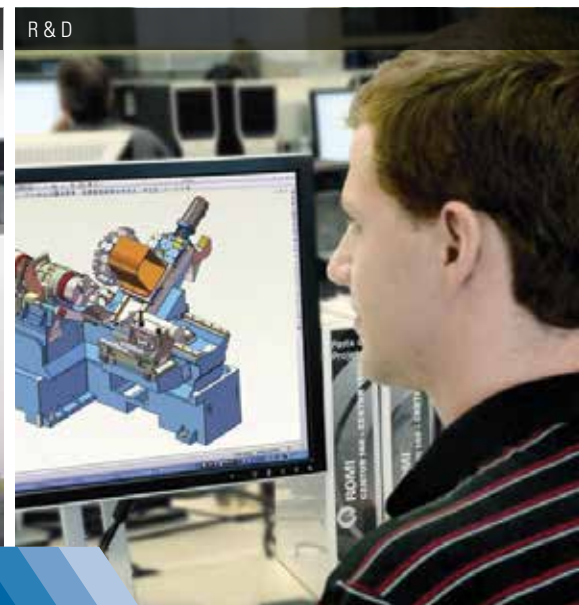
Flexible Manufacturing System (FMS)



Ultra Clean Room



Tridimensional



R & D

## ROMI MANUFACTURING TECHNOLOGY

### **ROMI: Since 1930 producing high technology.**

Since its foundation, the company is recognized by its focus on creating products and innovative solutions which guarantees its technological leadership among large manufacturers of machine tools market. Romi's industrial complex is among the most modern and productive ones in the segments of machine tools, plastic processing machines and cast iron parts of high quality.

### **Continuous investments in Research & Development result in products with state-of-the-art technology.**

The high technology applied to Romi machines offers highly reliable products, with high accuracy, efficiency and great flexibility for several types of machining processes. Romi R&D is focused on increasing competitiveness for its customers.

### **Present throughout Brazil and in over 60 countries.**

Romi covers all domestic territory through its sale subsidiaries network fully prepared to support customers supplying an extensive range of services from marketing to after sales.

International market is covered by Romi's subsidiaries located in United States, Mexico and Europe and also by its dealers network located in strategic logistic centers around the globe completely capable of serving customers in 5 continents.





## ROMI PRE-SALES AND POST-SALES TECHNICAL SUPPORT

**Romi is always there for its customers.**

Romi has a team of highly trained technical specialists prepared to offer state-of-the-art customer support services, such as pre-sales and post-sales technical support, training, specialized technical assistance, and original

spare parts that are guaranteed by the manufacturers. Romi has technical service phone support via Romi Integral Assistance (RAI) and experienced personnel ready to quickly and effectively answer programming and operation questions through the Integrated Customer Service System (SIAC).



Spare parts



Training



Specialized technical assistance



Productivity, robustness, torque and accuracy for machining in low and high production environments.

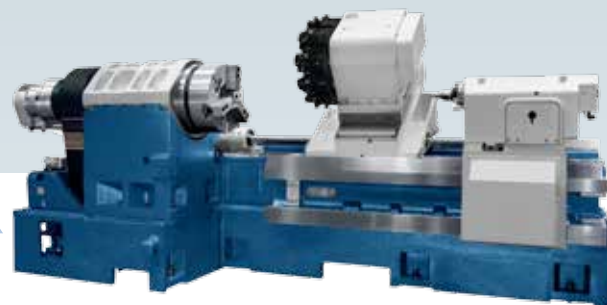


## ROMI G 550 / G 550 M

### Turning Centers

Turning Centers ROMI G 550 and G 550M (live tools), equipped with CNC FANUC, show high productivity, robustness, torque and accuracy for machining in low and high production environments. Robust structure, with monoblock bed, longitudinal and transversal carriage supported on hardened and straight guides, making line G 500 ideal for machining large size parts.

The model ROMI G 550 with live tooling allows the complete machining of a part in a single machine, because it also performs drilling and milling operations.



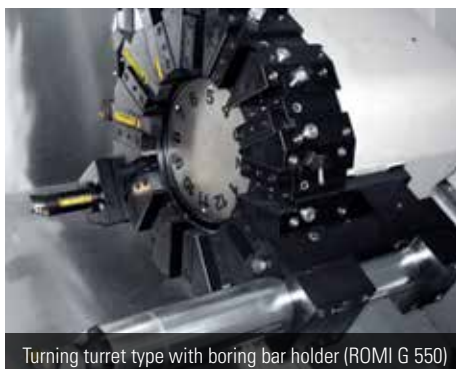
ROMI G 550



ROMI G 550 M



Milling turret type, BMT-75 disc (ROMI G 550M)



Turning turret type with boring bar holder (ROMI G 550)



Hydraulic steady rest

Technology, reliability and productivity for machining of pieces to Ø 700 mm / 27.5".

The ROMI VTL vertical turning centers with CNC SIEMENS were designed for operating in low and high production environments, allowing a significant increasing of productivity in machining process for a variety of chuck parts. R (right) and L (left) versions allow machines for working in machining cells, including integrated with robots or other automation systems.

They can be equipped live tooling tools for drilling and milling operations.



## ROMI VTL SERIES

Vertical Turning Centers



ROMI VTL 500R structure



Turning turret type servodriven for 12 fixed tools



Milling turret type servodriven for 12 fixed or driven tools BMT-65



ROMI VTL 500L | ROMI VTL 500R | ROMI VTL 500ML | ROMI VTL 500MR | ROMI VTL 700L | ROMI VTL 700R | ROMI VTL 700ML | ROMI VTL 700MR

Productivity and high accuracy for machining in low and high production environments.



**ROMI GL 350B / ROMI GL 350Y**

Equipped with 12 station turret with live tooling & Y axis, one single machine is capable of turning, milling, drilling, and tapping. Furthermore, ROMI GL 350B, equipped with left and right spindle (B axis) providing more effective machining, which offers a significant increase in productivity.

## ROMI GL SERIES

### Turning Centers

The turning centers from ROMI GL series, with FANUC CNC, were designed for operating in low and high production environments. Features like Y-axis and live tooling allow a significant increasing of productivity.

It can be equipped with a wide range of optional, for a perfect fitting to the machining needs. Bar feeder, tool setter, automation systems for automatic parts load and unload, among other.



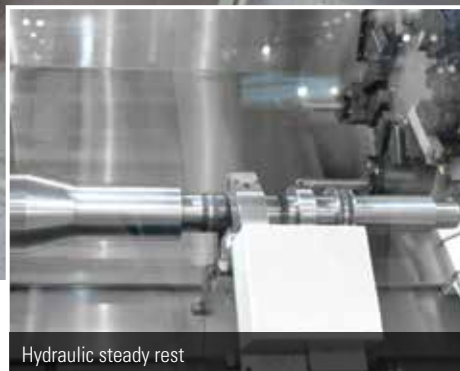




Right headstock (ROMI GL 350B)



Parts catcher and tool setter



Hydraulic steady rest



ROMI GL 170G | ROMI GL 240 | ROMI GL 240M | ROMI GL 280 | ROMI GL 280M | ROMI GL 350 | ROMI GL 350M | ROMI GL 350Y | ROMI GL 350B | ROMI GL 400 | ROMI GL 400M

## FANUC CNC Series 0i-F

- High Speed, Precision and Supreme Finishing Quality on machining through the use of AI CONTOUR CONTROL and NANO INTERPOLATION.

- FANUC PICTURE for easing HMI Customization.

- PLC Memory up to 100K Steps 1Mb (Type 1) with live I/O status monitoring directly on CNC screen.

- Oriented for Lathes and Machining Centers up to 11 control axes and Dual Path.

- Oriented for Lathes and Machining Centers up to 9 control axes on a Single Path.

- Standard Ethernet 100 Mbps for CNC and PC data exchange and Machine status monitoring.

Rua Otaviano Alves de Lima, 1536  
Limão - São Paulo - SP - CEP 02501-000

0800-77FANUC (0800-7732682) - Sem custo  
[www.fanucamerica.com](http://www.fanucamerica.com)

**FANUC**  
SOUTH AMERICA



A complete line of CNC lathes for various manufacturing segments, for parts up to Ø 2,5820 mm (Ø 101 in).



The Heavy-Duty ROMI C Series, equipped with SIEMENS CNC, are machines with high flexibility and productivity, with optimal level of power, torque, accuracy and stability for large parts, such as those used in sectors like: oil & gas, ethanol, shipbuilding, energy power generation, mining and other from base industries. They can be customized according to the machining requirements which they will be applied.

## ROMI C SERIES

### CNC Lathes and Heavy-Duty CNC Lathes

The ROMI C Series, with SIEMENS CNC, has a wide range of machine models, offering power, robustness and flexibility for multiple applications with several configurations of headstocks and tool holders.



U-type steady rest



Hydraulic tailstock



4 station electric turret



ROMI C 420  
ROMI C 1290H



ROMI C 510  
ROMI C 1300H



ROMI C 620  
ROMI C 1600H



ROMI C 680  
ROMI C 1800H



ROMI C 830  
ROMI C 2100H



ROMI C 1000  
ROMI C 2200H



ROMI C 1100H  
ROMI C 2600H





Electric turret with Y axis



Boring bar holder



Milling headstock with Y axis



## PROVEN EXPERIENCE & TRUSTED RESULTS

In Seco, everything is in constantly changing. In these 80 years of experience, we always believe in the continuity of research and development for all the more than 30,000 products that we have in the market. Our goal is address the needs and increase productivity and profitability of our customers.

**EXPAND YOUR POSSIBILITIES. YOUR SUCCESS STARTS HERE.**



MY PAGES  
YOUR DIGITAL PORTAL  
TO EVERYTHING SECO.  
[MYPAGES.SECOTOOLS.COM](http://MYPAGES.SECOTOOLS.COM)

**SECO**

Engine lathes for tooling, production, maintenance and education working.



ROMI T Series machines are carefully designed to provide full safety to the operator, according to ISO 23125 safety standards.

They are safety machines, versatile and reliable for many types of applications.

## ROMI T / ES-40 SERIES

### Engine Lathes



Lead screw protection



Steady rests



Operator protection



Carriage



ROMI T 240



ROMI T 350



ROMI T 500



ROMI ES-40



ROMI ES-40A



ROMI ES-40B



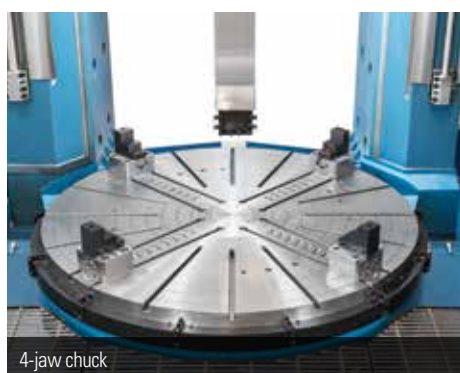
Capacity for turning parts up to  $\varnothing 8,000$  mm ( $\varnothing 315$  in) and 90 tons (198,000 lbs).

The heavy-duty vertical turning centers from ROMI VT Series, equipped with SIEMENS CNC, have robust mechanical structure, offering rigidity, stability and flexibility for machining processes of several kind of large parts, such as those used in sectors like: oil & gas, ethanol, shipbuilding, energy power generation, mining and other from base industries. They can be customized according to the machining requirements which they will be applied.



## ROMI VT SERIES

Heavy-Duty Vertical CNC Lathes



ROMI VT 1400



ROMI VT 2000



ROMI VT 2500



ROMI VT 3000



ROMI VT 5000



ROMI VT 6000

Flexibility and productivity for milling, drilling and tapping operations.

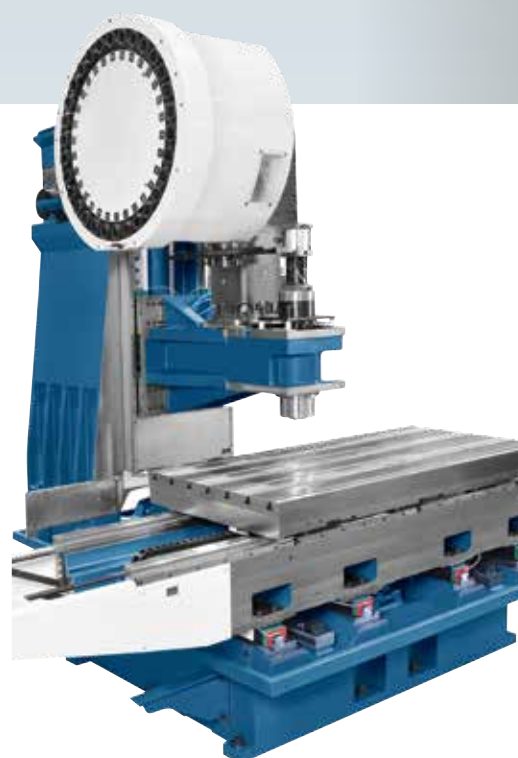


## ROMI D SERIES

### Vertical Machining Centers

The ROMI D Series, equipped with FANUC or SIEMENS CNC, are flexible machines, for multiple machining applications in production and tooling environments.

The variety of models with revolutions up to 15,000 rpm and Y axis between 600 mm and 1,530 mm allows proper application in several types of parts and materials. They can be equipped with the optional: rotary table (4th axis), probe system, through-spindle high pressure coolant system, among other.



ROMI D 1250 Structure





Automatic tool changer with 30 tools capacity



High accuracy ballscrews and linear guides



ROMI MGR rotary table (full 4th-axis)



ROMI D 600



ROMI D 800



ROMI 1000



ROMI D 1000AP



ROMI D 1250



ROMI D 1500

SIEMENS

## SINUMERIK 828D

Compact, strong and simple... Simply perfect!



The SINUMERIK 828D sets a new standard in the compact CNC class. High computational precision 80-bit NANO<sup>®</sup> (thousandth of nanometer). Advanced Surface – shortens cycle time and improves surface quality and finish.

High Definition Color screen 10,4". USB, CF Card and Ethernet interface available on the front of the CNC, easy access and no necessity of adapters. It is integrated with the high performance drives SINAMICS S120.

Easy to program with cycle support through the programGUIDE, and also with the incomparable conversational programming Shop Mill and Shop Turn. The SINUMERIK Operate is extremely user friendly.

[siemens.com/sinumerik](http://siemens.com/sinumerik)  
[siemens.com.br/cnc4you](http://siemens.com.br/cnc4you)

High technology for several geometries, better machining strategy, and productivity increase.



#### Tilting Rotary Table

Provides rigidity and ensures high precision for simultaneous machining with 5-axis, obtaining extremely accurate highly complex components.



Structure



Probe system



Tilting rotary table

## ROMI DCM 620 SERIES

### Vertical Machining Centers - 5-axis / 5-sided

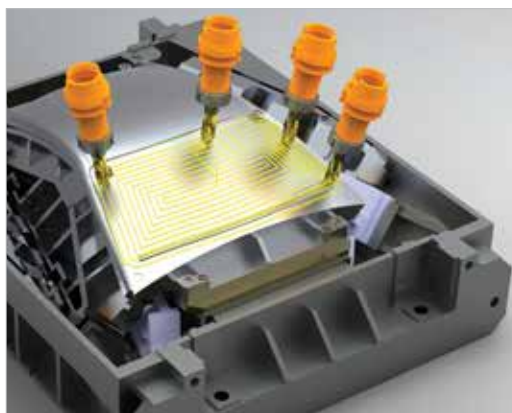
ROMI DCM Series consists of advanced vertical machining center of 5-axis / 5-sided, designed for machining simple and complex geometry parts with high speeds. The machining configuration with 5-axis simultaneous or 5-sided allows machining complex parts in a single setup, significantly reducing machining time with efficiency, precision, and productivity.



ROMI DCM 620-5X



ROMI DCM 620-5F



**worknc**

**edgecam** **visi**

### Mold and die machining

WorkNC CAM software is the premier automatic CNC software for surface or solid models.

[www.ska.com.br](http://www.ska.com.br)

**SKA**



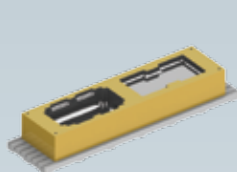


Flexibility for machining long and heavy parts with high geometric precision.

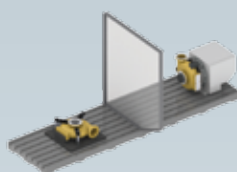
ROMI DCM 3000 equipped with SIEMENS CNC is intended for machining long parts with high accuracy, with no change of the geometric accuracy of the machine, due to the concept of fixed table. It allows working in two distinct areas of the table (swinging mode), where a metal partition shall be installed on the center of the stroke of X-axis, creating two distinct machining areas, which allows to perform load and unload of parts in one area, while the other one is machined in the another area, with significant productivity improvements.

## Moving Column Vertical Machining Center

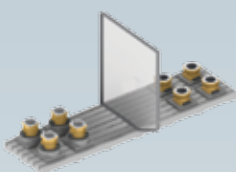
# ROMI DCM 3000



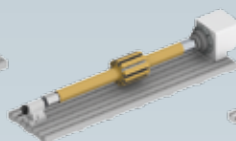
Heavy and large parts machining



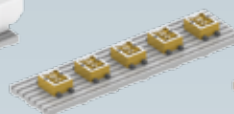
Pendular mode, with fixed part and rotary table



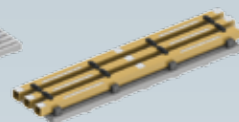
Pendular mode, enabling parts loading and unloading while the machining is in progress



Long parts machining with rotary table and rotary bearing



Various parts machining

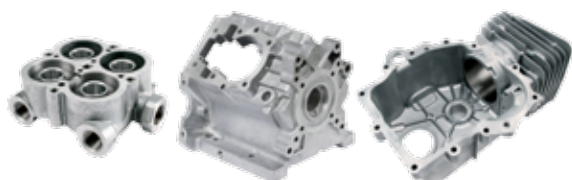


Long parts machining

# ROMI DCM 560DP

## Drilling and Tapping Center

ROMI DCM 560DP, equipped with SIEMENS CNC, offers high productivity for machining parts, mainly with holes and taps, in high production environments. The automatic changer of pallets offers reduction of passive time, resulting in shorter machining time.



THE WORLD'S #1  
CAM SOFTWARE COMPANY

Vero Software is a world leader in CAD CAM software with a proven track record of reliable product delivery. Vero provides solutions for the tooling, production engineering, and sheet metal industries with unparalleled ease of use and sophisticated toolpath generation.

[www.verosoftware.com](http://www.verosoftware.com)



PART OF  
HEXAGON

High capability of chip removal, accuracy, flexibility and productivity.

ROMI PH Series, equipped with SIEMENS CNC, present productivity on milling, drilling and tapping operations, on low and high production environments. The automatic pallet changer allows shorter downtime, resulting in shorter machining time, allowing also easy access of the user to the part load and unload area, and a quick setup for the clamping system.



| ROMI PH 400 | ROMI PH 630

Horizontal Machining Centers

# LINHA ROMI PH

Technology, reliability, and productivity for large parts machining.



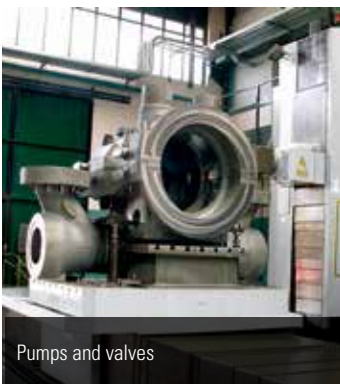
Peripheral protection with security system according to international standards

ROMI Lazzati HBM 130T, equipped with CNC SIMENS, shows high capacity for chip removal, flexibility, accuracy and productivity on milling, drilling and tapping of large size parts, such as those employed in sectors of: oil & gas, ethanol, naval, energy power generation and other from base industry.



Mandrilhadora

# ROMI LAZZATI HBM 130T



Pumps and valves



Machines and equipment in general



Power industry, oil & gas equipments



Large engines



## Machining Centers of premium quality

BURKHARDT+WEBER has been producing machine tools in the south of Germany since 1888. BW machines are made under the premise of respecting the environment and saving energy. They manufacture to the very latest standards, strong, precise, customized.

Building efficient and highly precise machining center for working on pieces of steel and casting up to a 20 ton (40,000 lbs) load capacity. In addition, B + W develops and produces fully automatic manufacturing systems for production with minimal operator input for several sectors: General engineering, Driving Technology, Power Generation Parts, wood and Plastic Processing machines, hydraulics / compressors, Diesel engines and systems, commercial Vehicles, rolling mills and mining, machine Tools and many others.

[www.burkhardt-weber.de](http://www.burkhardt-weber.de)



The combination of Burkhardt + Weber and Romi has strengthened both companies. Romi has added Burkhardt + Weber's product line to its machine tools product range in order to better supply premium machines produced in many to the customers of North, Central and South Americas.

# ROMI & Burkhardt+Weber

Technology and tradition for high performance machine tools manufacturing



	Engine Lathes		ROMI T 240		ROMI T 350		ROMI T 500								
	Distance between centers	m (in)	0.5 / 1.0 (20 / 40)		1.5 (59)		2.25 / 3.25 (88.5 / 128)								
	Swing over bed	mm (in)	445 (17)		520 (20)		660 (26)								
	Spindle nose	ASA	L0		L0		L0								
	Speed range	rpm	45 ~ 2,240		40 ~ 2,000		35 ~ 1,800								
	Power	hp / kW	7.5 / 5.5		7.5 / 5.5		7.5 / 5.5								
	Engine Lathes		ROMI ES-40		ROMI ES-40A		ROMI ES-40B								
	Distance between centers	m (in)	1.5 / 2.0 (59 / 79)		2.0 / 3.0 (79 / 118)		3.0 / 4.0 / 5.0 (118 / 157 / 197)								
	Swing over bed	mm (in)	510 (20)		650 (25)		815 (32)								
	Spindle nose	ASA	L1		L1		L1								
	Speed range	rpm	32 ~ 2,360		23 ~ 1,700		16 ~ 1,180								
	Power	hp / kW	15 / 11		15 / 11		15 / 11								
	CNC Lathes		ROMI C 420		ROMI C 510		ROMI C 620								
	Distance between center	m (in)	1.0 (40)		1.5 (59)		1.0 / 2.0 (40 / 79)								
	Swing over bed	mm (in)	430 (17)		520 (20)		620 (24)								
	Swing nose	ASA	A2-5"		A2-6"	A2-8"	A2-8"								
	Speed range	rpm	4 ~ 4,000		3 ~ 3,000	2 ~ 2,200	1 ~ 1,800								
	Power	hp / kW	10 / 7.5		15 / 11		25 / 18.5								
			ROMI C 680		ROMI C 830										
	Distance between centers	m (in)	2.0 / 3.0 (79 / 118)		3.0 / 5.0 (118 / 197)										
	Swing over bed	mm (in)	680 (27)		850 (33)										
	Spindle nose	ASA	A2-8"		A2-11"		A2-15"								
	Speed range	rpm	1 ~ 450 (range 1) 1 ~ 1,800 (range 2)		1 ~ 250 (range 1) 1 ~ 1,000 (range 2)		1 ~ 198 (range 1) 1 ~ 755 (range 2)								
	Power	hp / kW	40 / 30		40 / 30										
			ROMI C 1000		ROMI C 1000BB										
	Distance between centers	m (in)	3.0 / 5.0 (118 / 197)		3.0 (118)										
	Swing over bed	mm (in)	1,000 (40)		1,000 (40)										
	Spindle nose	ASA	A2-20"		A2-20"										
	Speed range	rpm	1 ~ 125 (range 1) 1 ~ 500 (range 2)		1 ~ 125 (range 1) 1 ~ 400 (range 2)										
	Power	hp / kW	40 / 30		40 / 30										
	Heavy-Duty CNC Lathes		ROMI C 1100H		ROMI C 1290H		ROMI C 1300H / C 1600H								
	Distance between centers	m (in)	2.0 / 3.5 / 5.0 / 6.5 / 8.0 / 9.5 (79 / 138 / 197 / 256 / 315 / 374)		3.5 / 5.0 (138 / 197)		3.5 / 5 / 6.5 / 8 / 9.5 / 11 / 12.5 (138 / 197 / 256 / 315 / 374 / 433 / 492)								
	Swing over bed	mm (in)	1,110 (43)		1,330 (52)		1,300 (51)								
	Spindle nose	ASA	A2-20"		A2-20"		A2-20"								
	Speed range	rpm	1 ~ 500		1 ~ 500		1 ~ 500								
	Max. admissible weight between centers at 50 rpm	kg (lbs)	15,000 (33,000)		15,000 (33,000)		15,000 (33,000)								
	Power	hp / kW	72 / 53		72 / 53		114								
							84								
			ROMI C 1300HBB		ROMI C 1800H / C 2100H		ROMI C 2200H / C 2600H								
	Distance between centers	m (in)	3.5 / 5.0 (138 / 197)		4 / 5.5 / 7 / 8.5 / 10 (157 / 216 / 275 / 334 / 393)		4 / 6 / 8 / 10 / 12 (157 / 236 / 315 / 393 / 472)								
	Swing over bed	mm (in)	1,300 (51)		1,800 (71)		2,210 (87)								
	Spindle nose	ASA	Flat Nose		A2-20"		A2-20"								
	Speed range	rpm	1 ~ 350		1 ~ 500	1 ~ 300	1 ~ 500	1 ~ 300							
	Max. admissible weight between centers at 50 rpm	kg (lbs)	15,000 (33,000)		30,000 (66,000)		50,000 (110,000)								
	Power	hp / kW	114		114	84	155	114							
	Extra Heavy-Duty CNC Lathes		ROMI UTR 800		ROMI UT 1000		ROMI UT 1500		ROMI UT 1700		ROMI UT 2000				
	Distance between centers	m (in)	3.5 / 5 (138 / 197)		4 / 5.5 / 7 / 8.5 / 10 (157 / 216 / 275 / 334 / 393)		4 / 6 / 8 / 10 / 12 (157 / 236 / 315 / 393 / 472)		8 / 10 / 12 (315 / 393 / 472)		8 / 10 / 12 (315 / 393 / 472)				
	Swing over bed	mm (in)	1,200 (47)		1,060 (42)		1,500 (59)		1,700 (67)		2,020 (80)				
	Max. admissible weight between centers at 50 rpm	kg (lbs)	22,000 (48,000)		30,000 (66,000)		50,000 (110,000)		40,000 (88,000)		100,000 (220,000)				
	Spindle nose	ASA	A2-20"		Especial		Especial		Especial		Especial				
	Speed range	rpm	1 ~ 500		1 ~ 300		1 ~ 300		1 ~ 188 / 1 ~ 300		1 ~ 188 / 1 ~ 300				
	Power	hp / kW	114 / 84		100 / 75		200 / 150		200 / 150		300 / 220				
Heavy-Duty Vertical CNC Lathes		ROMI VT 1400M		ROMI VT 2000M		RROMI VT 2500M		ROMI VT 3000M		ROMI VT 4000M		ROMI VT 5000		ROMI VT 6000	
Maximum cutting diameter	mm (in)	1,600 (63)		2,100 (83)		2,700 (106)		3,400 (134)		4,500 (177)		7,000 (276)		7,000 / 8,000* (276 / 315*)	
Maximum permissible diameter	mm (in)	1,600 (63)		2,100 (83)		2,800 (110)		3,400 (134)		4,500 (177)		7,000 (276)		7,000 / 8,000* (276 / 315*)	
Maximum cutting height with RAM	mm (in)	1,500 (59)		1,500 (59)		2,100 (83)		2,100 (83)		1,000 (39)		4,000 (157)		4,000 (157)	
Chuck diameter	mm (in)	1,400 (55)		2,000 (79)		2,500 (98)		3,000 (118)		4,000 (157)		5,000 (197)		6,000 (236)	
Low speed range	rpm	1 a 88		1 a 100		1 a 60		1 a 60		1 a 30		1 a 25		1 a 25	
High speed range	rpm	1 a 400		1 a 250		1 a 180		1 a 155		1 a 80		1 a 50		1 a 50	
Max. weight allowed on chuck	kg (lbs)	10,000 (22,100)		15,000 (33,100)		25,000 (55,100)		25,000 (55,100)		15,000 (33,100)		90,000 (198,400)		90,000 (198,400)	
Driven tool (cont.)	hp / kW	42 / 31		42 / 31		42 / 31		42 / 31		42 / 31		42 / 31		42 / 31	
Main motor(cont.)	hp / kW	2x42 / 2x31		2x42 / 2x31		2x42 / 2x31		2x42 / 2x31		2x42 / 2x31		2x72 / 2x54		2x72 / 2x54	
(*)Optional under request												2nd RAM*		2nd RAM*	
												2nd RAM*		Tailstock function*	
														Tailstock function*	



**Turning Centers**

		ROMI GL 170G	ROMI GL 240 / GL 240M	ROMI GL 280 / GL 280M	ROMI GL 350 / GL 350M
Maximum cutting diameter	mm (in)	170 (7)	300 / 260 (12 / 10)	340 / 280 (13 / 11)	400 / 390 (16 / 15)
Maximum cutting length	mm (in)	-	400 (16)	540 (21)	1,140 (45)
Spindle nose	ASA	A2-5"	A2-5" / A2-6"	A2-6" / A2-8"	A2-6" / A2-8"
Speed range	rpm	6 ~ 6,000	6 ~ 6,000 / 4 ~ 4,500	4 ~ 4,500 / 3 ~ 3,500	4 ~ 4,500 / 3 ~ 3,500
Power	hp / kW	15 / 11	20 / 15	25 / 18.5	25 / 18.5

**ROMI GL 350Y****ROMI GL 350B****ROMI GL 400 / GL 400M**

Maximum cutting diameter	mm (in)	350 (14)	350 (14)	400 (16)
Maximum cutting length	mm (in)	740 (29)	740 (29)	1,140 (45)
Spindle nose (left headstock)	ASA	A2-6" / A2-8"	A2-6" / A2-8"	A2-8"
Speed range (left headstock)	rpm	5 ~ 5,000 / 4 ~ 4,000	5 ~ 5,000 / 4 ~ 4,000	3 ~ 3,000 / 2 ~ 2,500
Power (left headstock)	hp / kW	33 / 25	33 / 25	30 / 22
Spindle nose (right headstock)	ASA	-	A2-5"	-
Speed range (right headstock)	rpm	-	6 ~ 6,000	-
Power (right headstock)	hp / kW	-	29 / 22	-

**Turning Centers****ROMI G 550 / G 550M**

Maximum cutting diameter	mm (in)	550 / 530 (22 / 21)
Maximum cutting length	mm (in)	1,300 (51)
Spindle nose	ASA	A2-8"
Speed range	rpm	2 ~ 2,500
Power	hp / kW	50 / 37

**Vertical Machining Centers****ROMI D 600****ROMI D 800****ROMI D 1000****ROMI D 1000AP**

Spindle taper	ISO	40	40	40	40
Table longitudinal travel (X-axis)	mm (in)	600 (24)	800 (31)	1,020 (40)	1,020 (40)
Table traverse travel (Y-axis)	mm (in)	530 (21)	530 (21)	610 (24)	610 (24)
Headstock travel (Z-axis)	mm (in)	580 (23)	580 (23)	640 (25)	640 (25)
Speed range	rpm	8 ~ 8,000 / 10 ~ 10,000	8 ~ 8,000 / 10 ~ 10,000	8 ~ 8,000 / 10 ~ 10,000	15 ~ 15,000
Power	hp / kW	20 / 15	20 / 15	25 / 18.5	25 / 18.5

**ROMI D 1250****ROMI D 1500**

Spindle taper	ISO	40	40 / 50
Table longitudinal travel (X-axis)	mm (in)	1,270 (50)	1,530 (60)
Table traverse travel (Y-axis)	mm (in)	610 (24)	760 (30)
Headstock travel (Z-axis)	mm (in)	640 (25)	760 (30)
Speed range	rpm	8 ~ 8,000 / 10 ~ 10,000	8 ~ 8,000 / 10 ~ 10,000 / 12 ~ 12,000
Power	hp / kW	25 / 18.5	30 / 22

**Vertical Turning Centers****ROMI VTL 500R / L  
ROMI VTL 500MR / ML****ROMI VTL 700R / L  
ROMI VTL 700MR / ML**

Max. cutting diameter	mm (in)	500 (20)	700 (28)
Max. admissible diameter	mm (in)	620 (24)	700 (28)
Max. cutting height	mm (in)	668 / 620 (26 / 24)	627 / 635 (25 / 25)
Max. admissible height	mm (in)	668 / 620 (26 / 24)	627 / 635 (25 / 25)
Spindle nose	ASA	A2-8"	A2-11"
Speed range	rpm	2 ~ 2,500	2 ~ 2,000
Power	hp / kW	28 / 21	46 / 34

**Drilling and Tapping Center****ROMI  
DCM 560DP**

Spindle taper	ISO	40
X-axis travel	mm (in)	560 (22)
Y-axis travel	mm (in)	400 (16)
Z-axis travel	mm (in)	400 (16)
Speed range	rpm	15,000
Power	hp / kW	15 / 11

**Vertical Machining  
Center - 5-axis / 5-sided****ROMI DCM 620-5X****ROMI DCM 620-5F**

Spindle taper	ISO	40	40
X-axis travel	mm (in)	620 (24)	620 (24)
Y-axis travel	mm (in)	520 (20)	520 (20)
Z-axis travel	mm (in)	460 (18)	460 (18)
Speed range	rpm	12,000	10,000
Power	hp / kW	24 / 18	24 / 18

**Horizontal Machining Centers****ROMI PH 400****ROMI PH 630**

Spindle taper	ISO	40	50
Column travel (X-axis)	mm (in)	630 (25)	1,050 (41)
Headstock travel (Y-axis)	mm (in)	630 (25)	900 (35)
Table travel (Z-axis)	mm (in)	630 (25)	1,000 (39)
Speed range	rpm	10 ~ 10,000	6 ~ 6,000 (ZF gearbox)
Power	hp / kW	30 / 22	46 / 34.5

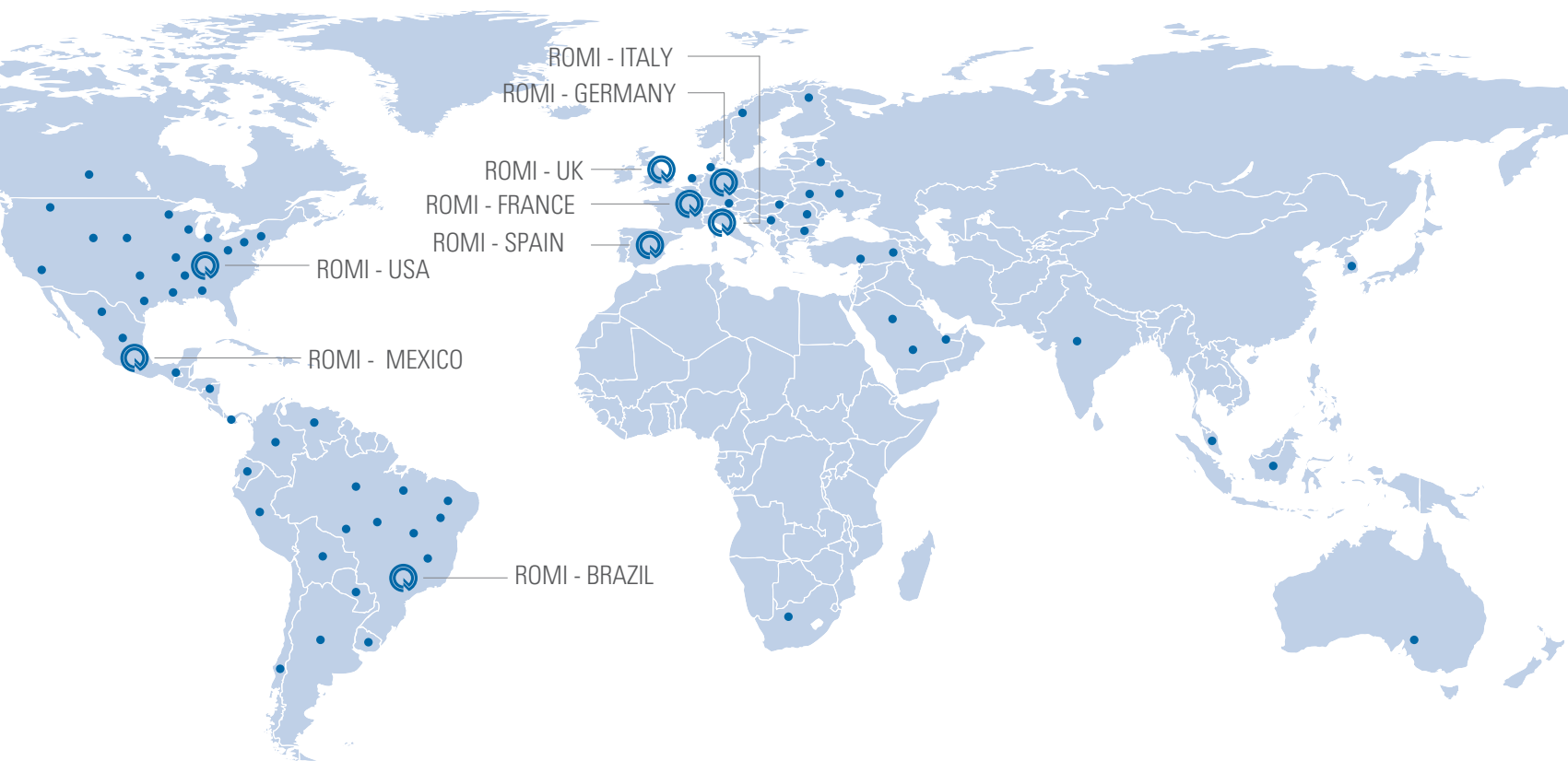
**Moving Column Vertical  
Machining Center****ROMI  
DCM 3000**

Spindle taper	ISO	40
X-axis travel	mm (in)	3,000 (118)
Y-axis travel	mm (in)	840 (33)
Z-axis travel	mm (in)	600 (24)
Speed range	rpm	10 ~ 10,000
Power	hp / kW	30 / 22

**Boring Machine****HBM 130T**

Spindle taper	ISO	50
Quill diameter	mm (in)	130 (5)
Headstock vertical travel (Y-axis)	mm (in)	2,000 (79)
Table travel (X-axis)	mm (in)	4,000 (157)
Column longitudinal travel (Z-axis)	mm (in)	1,800 (71)
Quill travel (W-axis)	mm (in)	800 (31)
Speed range	rpm	5 ~ 3,000
Power	hp / kW	79 / 58

## WORLDWIDE PRESENCE



Brazil



United States



Germany



England



France



Spain



Italy



Germany - B+W



**ROMI**

WWW.ROMI.COM

### Indústrias Romi SA

Rod. SP 304, Km 141,5  
Santa Bárbara d'Oeste SP  
13453 900 Brazil  
Phone +55 (19) 3455 9800  
[export-mf@romi.com](mailto:export-mf@romi.com)

### Burkhardt+Weber

**Fertigungssysteme GmbH**  
Burkhardt+Weber-Strasse 57  
72760 Reutlingen, Germany  
Phone +49 7121 315-0  
Fax +49 7121 315-104  
[info@burkhardt-weber.de](mailto:info@burkhardt-weber.de)  
[www.burkhardt-weber.de](http://www.burkhardt-weber.de)

### ROMI Machine Tools, Ltd

1845 Airport Exchange Blvd  
Erlanger KY - 41018 USA  
Phone +1 (859) 647 7566  
Fax +1 (859) 647 9122  
[sales@romiusa.com](mailto:sales@romiusa.com)

### ROMI Europa GmbH

Wasserweg 19 D 64521  
Gross Gerau Germany  
Phone +49 (6152) 8055 0  
Fax +49 (6152) 8055 50  
[sales@romi-europa.de](mailto:sales@romi-europa.de)

### ROMI France SAS

Parc de Genève, 240  
Rue Ferdinand Perrier 69800  
St Priest  
Phone +33 4 37 25 60 70  
Fax +33 4 37 25 60 71  
[infos@romifrance.fr](mailto:infos@romifrance.fr)

### ROMI Machines UK Limited

Leigh Road  
Swift Valley Industrial Estate  
Rugby CV21 1DS  
Phone +44 1788 544221  
Fax +44 1788 542195  
[sales@romiuk.com](mailto:sales@romiuk.com)

### ROMI Máquinas España

Calle Comadrán, 15  
Pol. Ind. Can Salvatela  
C.P. 08210 - Barberà del Vallès  
Phone +34 93 719 4926  
Fax +34 93 718 7932  
[info@romi.es](mailto:info@romi.es)

### ROMI in Mexico

Campos Elíseos 385-B Piso 5  
Col. Polanco Chapultepec  
C.P. 11560 - Del. Miguel Hidalgo  
Ciudad de México  
Phone +52 55 68403094  
[ventasmx@romi.com](mailto:ventasmx@romi.com)

### ROMI Italia Srl

Via Morigi, 33 - 29020  
Gossolengo, Piacenza - Italy  
Phone +39 349 590 0474  
[macchineutensili@romi.com](mailto:macchineutensili@romi.com)



**ISO 9001:2008**  
Certificate No. 31120



**ISO 14001:2004**  
Certificate No. 70671

Specifications subject to change without notice.  
Check availability and technical characteristics of the products to your country.